

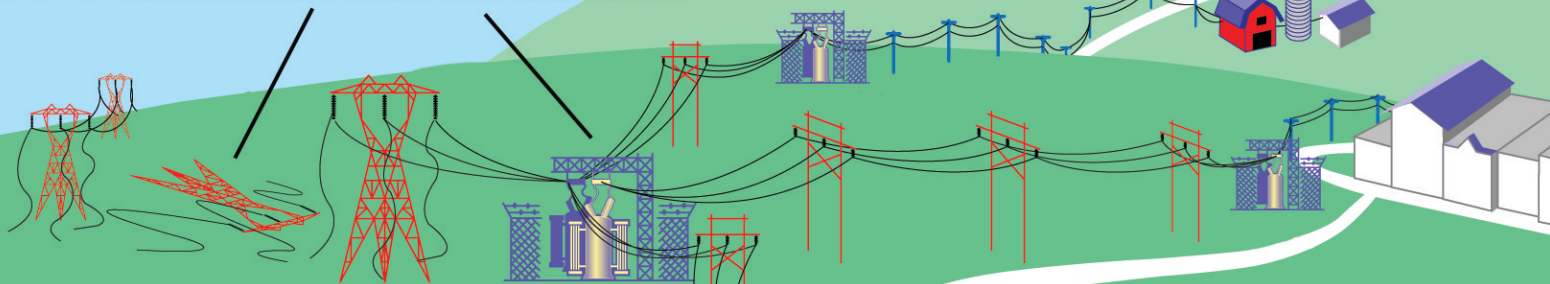


Joe Wheeler EMC

POWER RESTORATION PROCEDURE

Area enlarged: Members themselves (not the co-op) are responsible for damage to the service installation on the building. Your co-op can't fix this. Call a licensed electrician.

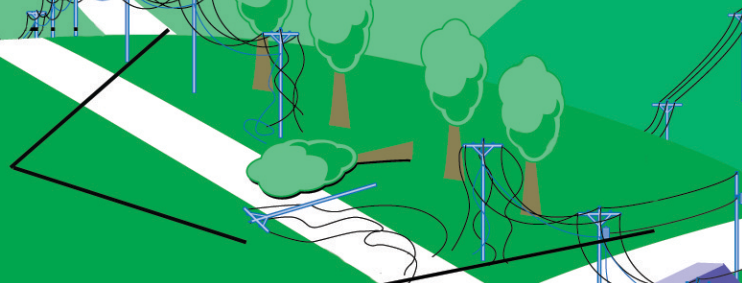
STEP 1: Transmission lines and substation



STEP 2: Distribution substation



STEP 3: Main distribution supply lines



STEP 4: Tap lines



STEP 5: Service lines

