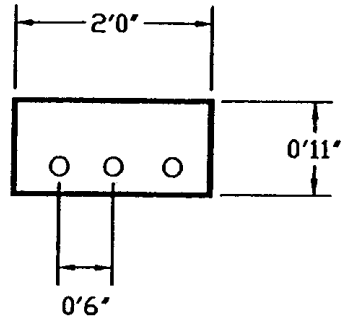


# SECTIONALIZING CABINETS

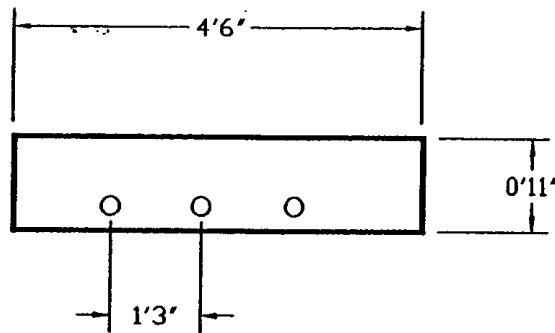
REVISED JANUARY 3, 2000

SINGLE-PHASE



FRONT  
(TYPICALLY ROAD SIDE)

MULTI-PHASE



FRONT  
(TYPICALLY ROAD SIDE)

## NOTES:

1. SECTIONALIZING CABINETS SHOULD BE CENTERED ON THE PROPERTY LINE IN THE ORIENTATION SHOWN ON THE SITE LAYOUT DRAWING SUPPLIED BY THE ENGINEER.
2. CONDUITS SHOULD BE ARRANGED IN THE CABINET SO THAT THEY EXTEND FROM THE CABINET IN THE DIRECTION THEY ARE CLOSEST TO (IE. CONDUITS ON THE LEFT SIDE SHOULD GO TO THE LEFT AND RIGHT SIDE TO THE RIGHT).
3. CONDUITS SHALL NOT EXTEND BEYOND THE DIMENSIONS SHOWN.