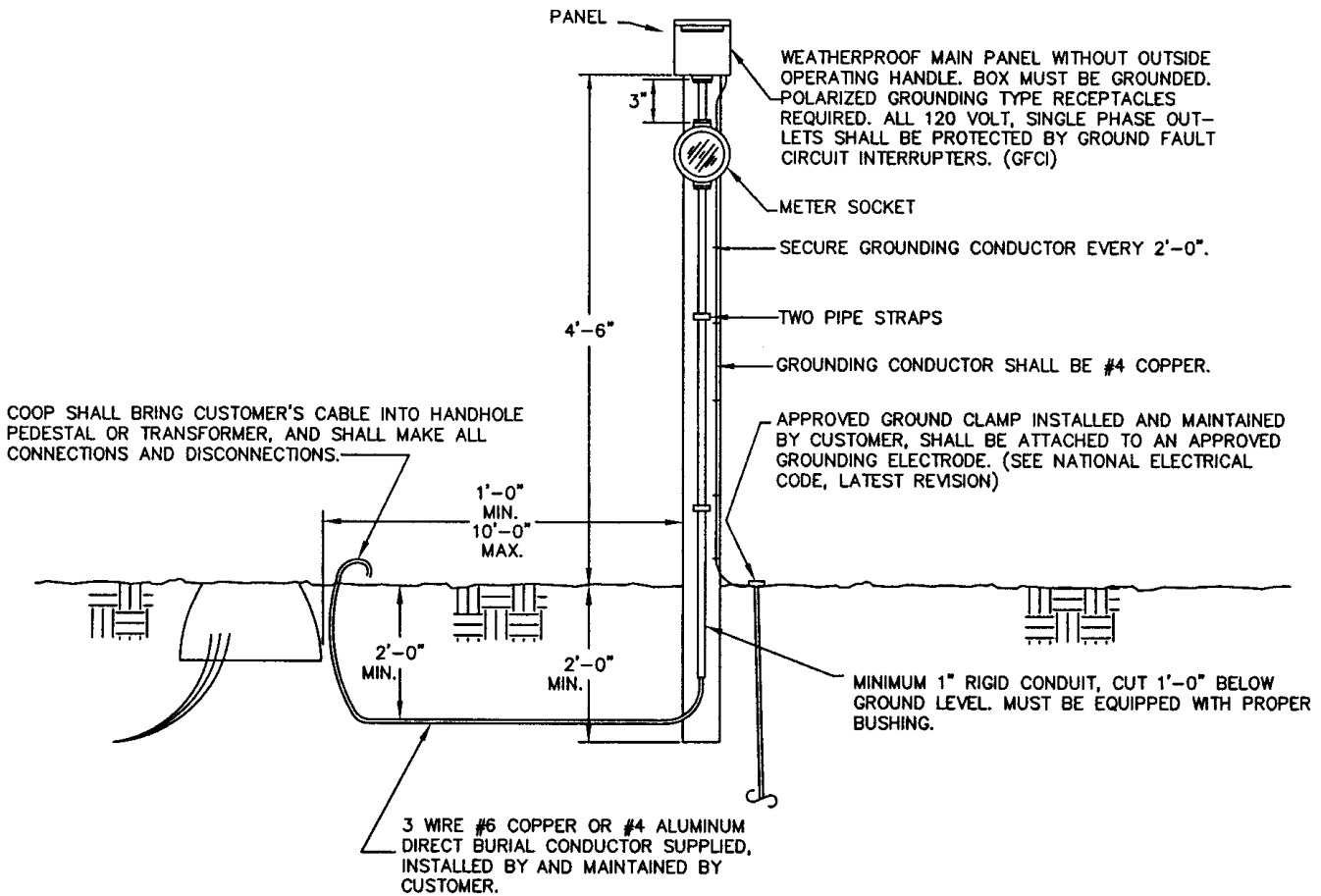


SOCKET WIRING DIAGRAM



NOTES:

1. ALLOW 3'-0" OF CONDUCTOR AT THE COOP'S POINT OF ATTACHMENT. NEUTRAL CONDUCTOR MUST BE IDENTIFIED.
2. SUPPORT MUST BE LOCATED AS NEAR AS POSSIBLE TO THE COOP'S POINT OF ATTACHMENT. CARE SHOULD BE EXERCISED IN CHOOSING LOCATION OF SUPPORT TO INSURE PROPER CLEARANCE FROM DRIVEWAYS, CONSTRUCTION AREA, ETC.
3. SUPPORT TO BE 4" X 4" X 8'-0" PRESSURE TREATED WOOD.
4. GROUND WIRE TO TERMINATE IN PANEL WHEN USING ROUND SOCKET.
5. CALL COOP FOR LOCATION.

SINGLE PHASE METERED CONSTRUCTION POLE  
FROM UNDERGROUND SOURCE—70 AMPERE MAXIMUM